

ROAD INDEX

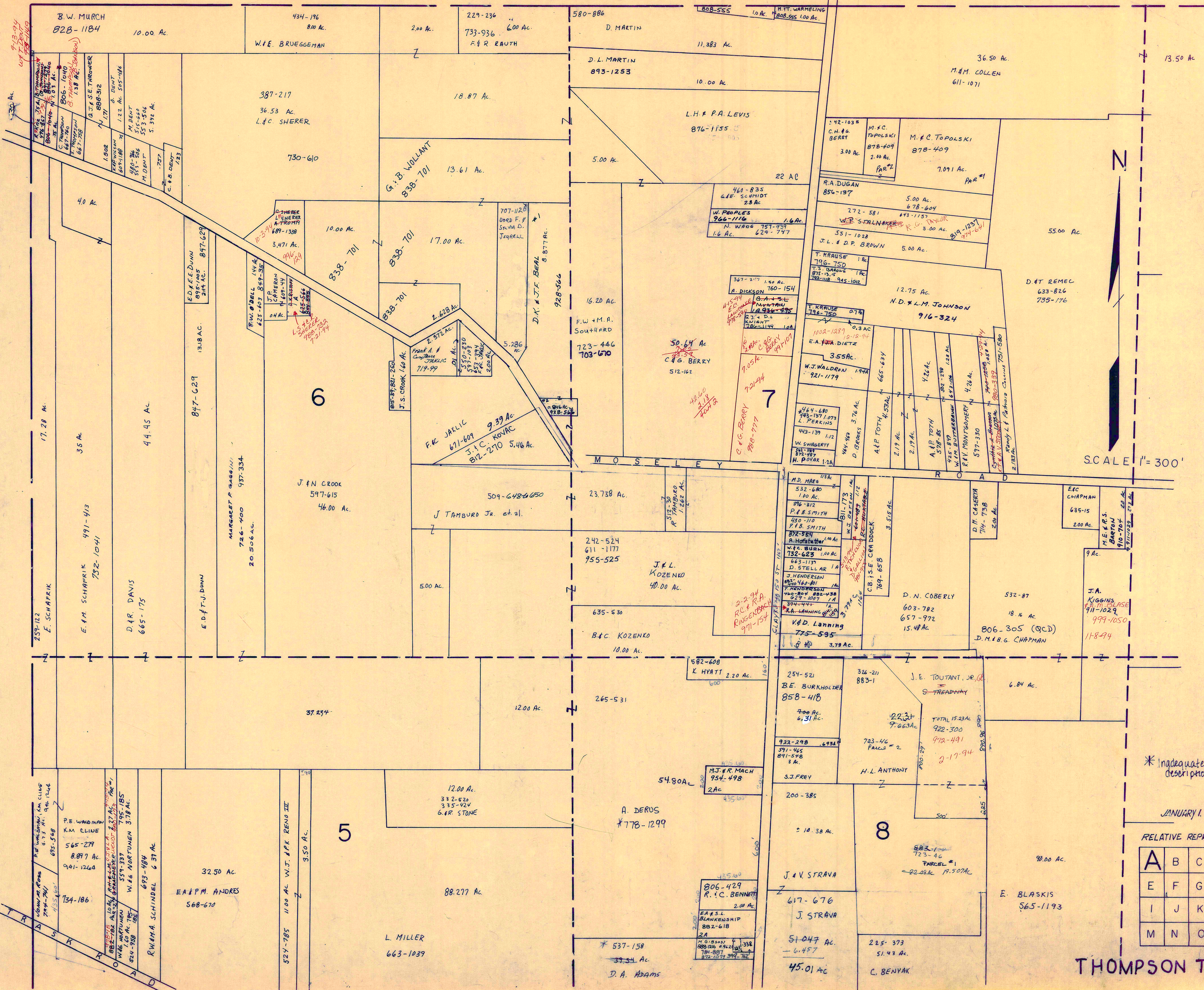
I	cont.	R	ROCK CREEK RD. A6-F4
J		S	SHORT RD. F2-F3 SIDLEY RD. F1-F6 STOCKING RD. D1-F1
K		T	THOMPSON RD. A3-F3 TRASK RD. A2-A3
L		U	
M	MADISON RD. D1-D6 MOSELEY RD. A1-F2	V	VALENTINE RD. A4-B4
N		W	WOODCREEK DR. B6 WOODHILL DR. B6
O		X	
P	PHILIPS RD. F3 PLANK RD. A5-B6	Y	
Q		Z	

- ① LEDGEMONT HIGH SCHOOL
- ② LEDGEMONT ELEM. SCHOOL
- ③ THOMPSON METHODIST CHURCH
- ④ ST PATRICKS CHURCH
- ⑤ GRACE EVANGELICAL LUTHERAN CH.
- ⑥ CEMETERY
- ⑦ MAPLE GROVE CEMETERY
- ⑧ CEMETERY
- ⑨ THOMPSON VOL. FIRE DEPT.
- ⑩ THOMPSON TOWN HALL

THOMPSON TOWNSHIP
 SCALE: 1" = 2000'
 ROBERT L. PHILLIPS,
 GEALUGA COUNTY ENGINEER

--- UNPAVED ROADS
 --- PAVED ROADS
 --- TOWNSHIP LINE
 --- COUNTY LINE

L A K E C O U N T Y



SCALE 1" = 300'

* Inadequate description

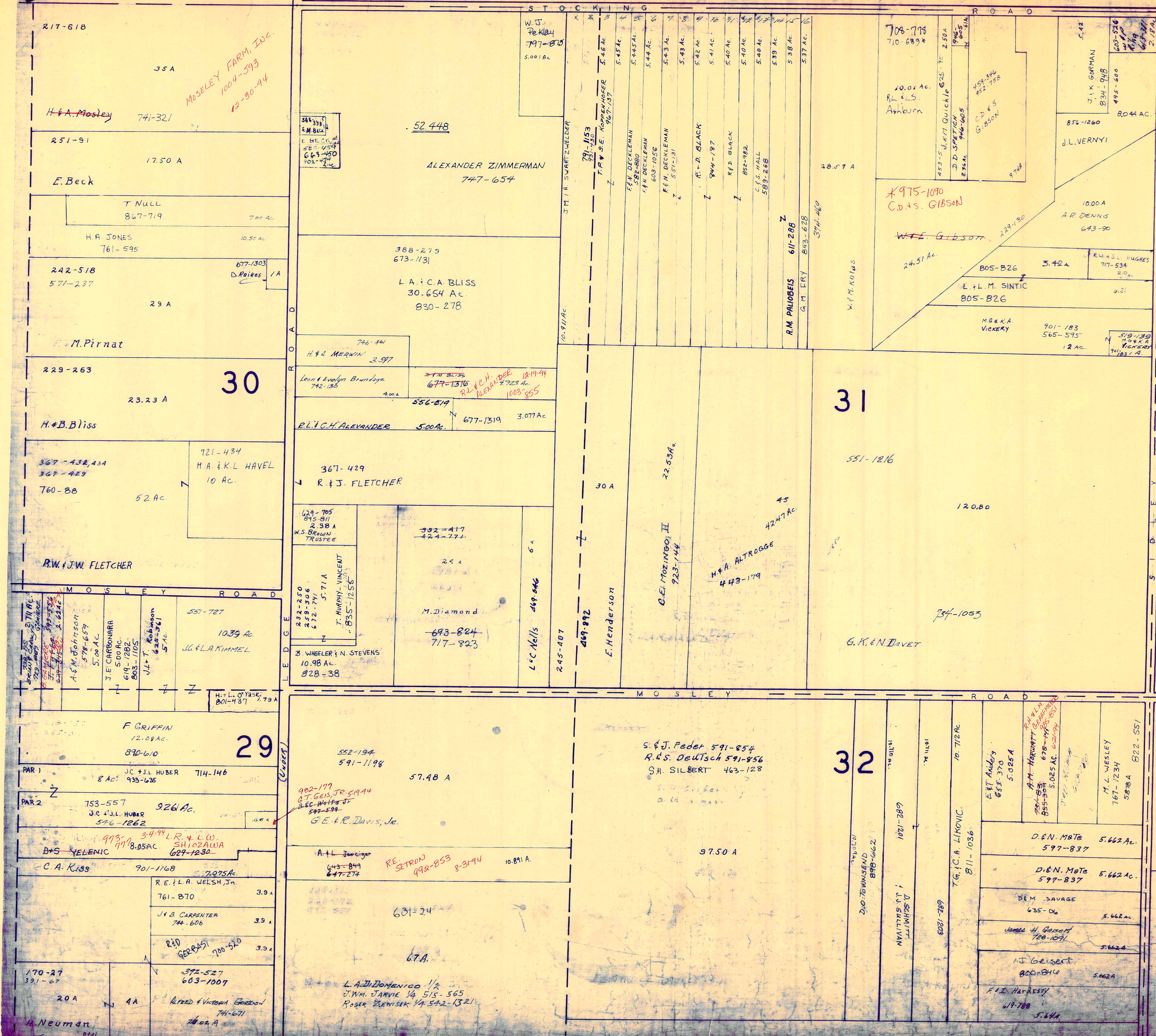
JANUARY 1, 1994

RELATIVE REPRESENTATION

A	B	C	D
E	F	G	H
I	J	K	L
M	N	O	P

THOMPSON TWP.

L A K E C O U N T Y



217-618
35A
H.A. Mosley 741-321
MOSELEY FARM, Inc.
1004-598
12-30-94

251-91
17.50 A
E. Beck

T NULL
847-719
7.00 Ac.
H.A. JONES
761-595
10.50 Ac.

242-518
571-237
29 A
M. Pirnat

229-263
23.23 A
30
H.B. Bliss

367-438, 434
367-429
760-88
52 Ac.
721-434
H.A. & K.L. HAVEL
10 Ac.
R.W. & J.W. FLETCHER

M O S L E Y R O A D
J.C. CARBONARA
518-659
5.00 AC.
J.L. & T. ROBINSON
625-561
5.1 AC.
551-727
10.39 Ac.
J.G. & L.A. KIMMEL

F. GRIFFIN
12.08 AC.
870-610
29
PAR 1
8 AC. J.C. & J.L. HUBER
933-635
714-146

PAR 2
753-557
926 AC.
J.C. & J.L. HUBER
596-1262
8.05 AC. L.R. & L.O. SHIOZAWA
629-1230

C.A. RISS
901-1168
7.075 AC.
761-870
3.9 A
R.E. & L.A. WELSH, JR.
744-606
3.9 A
J.B. CARPENTER
744-606
3.9 A
R.D. GERBASTI
700-520
3.9 A

170-27
391-67
20 A
4 A
372-527
603-1007
ALFRED & VICTORIA GORDON
74-671
28.02 A
A. Neuman

STOCKING ROAD
W.J. Peckham
797-878
5.001 Ac.
52.448
ALEXANDER ZIMMERMAN
747-654
388-279
673-1131
L.A. & C.A. BLISS
30.654 Ac.
830-278
746-441
H.A. MERWIN
3.597
Leon & Evelyn Brundage
742-135
4.00 A
556-579
R.L. & C.H. ALEXANDER
5.00 AC.
677-1319
3.077 AC.
367-429
R. & J. FLETCHER
629-705
815-811
2.98 A
W.S. BROWN
TRUSTEE
232-250
232-306
672-771
5.71 A
T. MURPHY-VINCENT
835-1256
6 A
332-417
424-771
24 A
M. Diamond
693-824
717-823
L.C. Neils
469-546
245-407
469-892
F. Henderson
22.534 Ac.
Q. EL MOZINGO, II
923-144
45
H.A. ALTROGGE
443-179
4247 AC.

31
551-1216
120.80
574-1083
G.K. & N. DAVET
30 A
22.534 Ac.
45
H.A. ALTROGGE
443-179
4247 AC.

32
57.48 A
552-194
591-1198
982-177
G.T. GEIS, JR. 51944
G.C. MATTHEW JR.
547-539
G.E. & R. DAVIS, JR.
A.L. JAWIGER
643-849
647-274
RE. SETRON
992-853
83194
10.81 A.
59.50 A
S. & J. Feder 591-854
R.S. Deutch 591-856
S.H. SILBERT 463-128
681-24
67A.
L. & J. DOMENICO 1/2
J.W.M. JARVIS 1/4 515-565
ROGER ZEMISEK 1/4 542-1321

708-778
710-689*
10.01 Ac.
R.E.S. Auburn
453-2 J.M. QUICKIE
625-70
250A
D.D. SPETIGH
946-605
236 AC.
259-346
452-756
C.D. & S. GIBSON
977A
876-1260
8044 AC.
J.L. VERNYI
10.00 A
A.R. DENNIS
643-90
24.51 Ac.
W.F. GIBSON
229-730
BOS-B26
3.42 A
L. & L.M. SINTIC
805-B26
M.G. & K.A. VICKERY
901-183
565-575
12 AC.
R.W. & S. HUGHES
747-534
2.0 A
519-139
504 X R
VICKERY
901-183
1 A

31
551-1216
120.80
574-1083
G.K. & N. DAVET

32
1010 AC.
1011 AC.
10.712 AC.
E.H. Aiders
685-370
5.025 A
A.M. HORVATH
678-1425
621-94
5.025 AC.
M.L. WESLEY
767-1234
5.878 A
D.E.N. MOTE
597-837
5.662 AC.
D.E.N. MOTE
597-837
5.662 AC.
D.E.M. SAVAGE
635-06
5.662 AC.
James H. Gezell
728-1091
5.662 A
J. Geisert
800-840
5.662 A
F.H. HARVEY
619-788
5.641



SCALE 1" = 300'

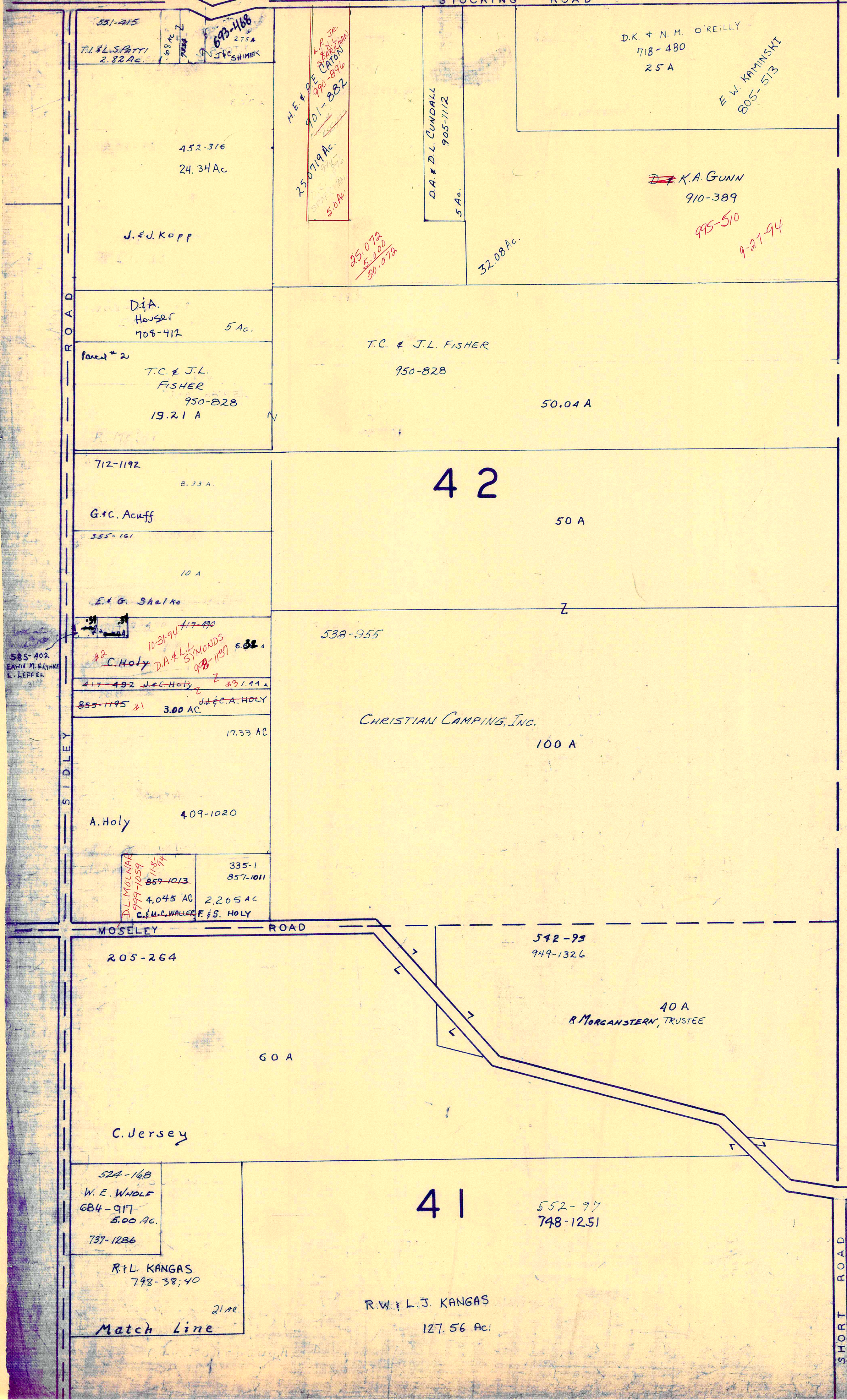
Grid table with letters A-D and numbers 1-4.

THOMPSON TWP

JANUARY 1, 1994
RELATIVE REPRESENTATION

* Inadequate description

L A K E C O U N T Y



A S H T A B U L A C O U N T Y



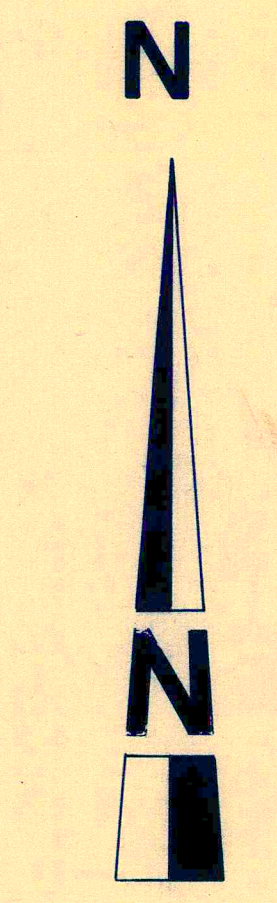
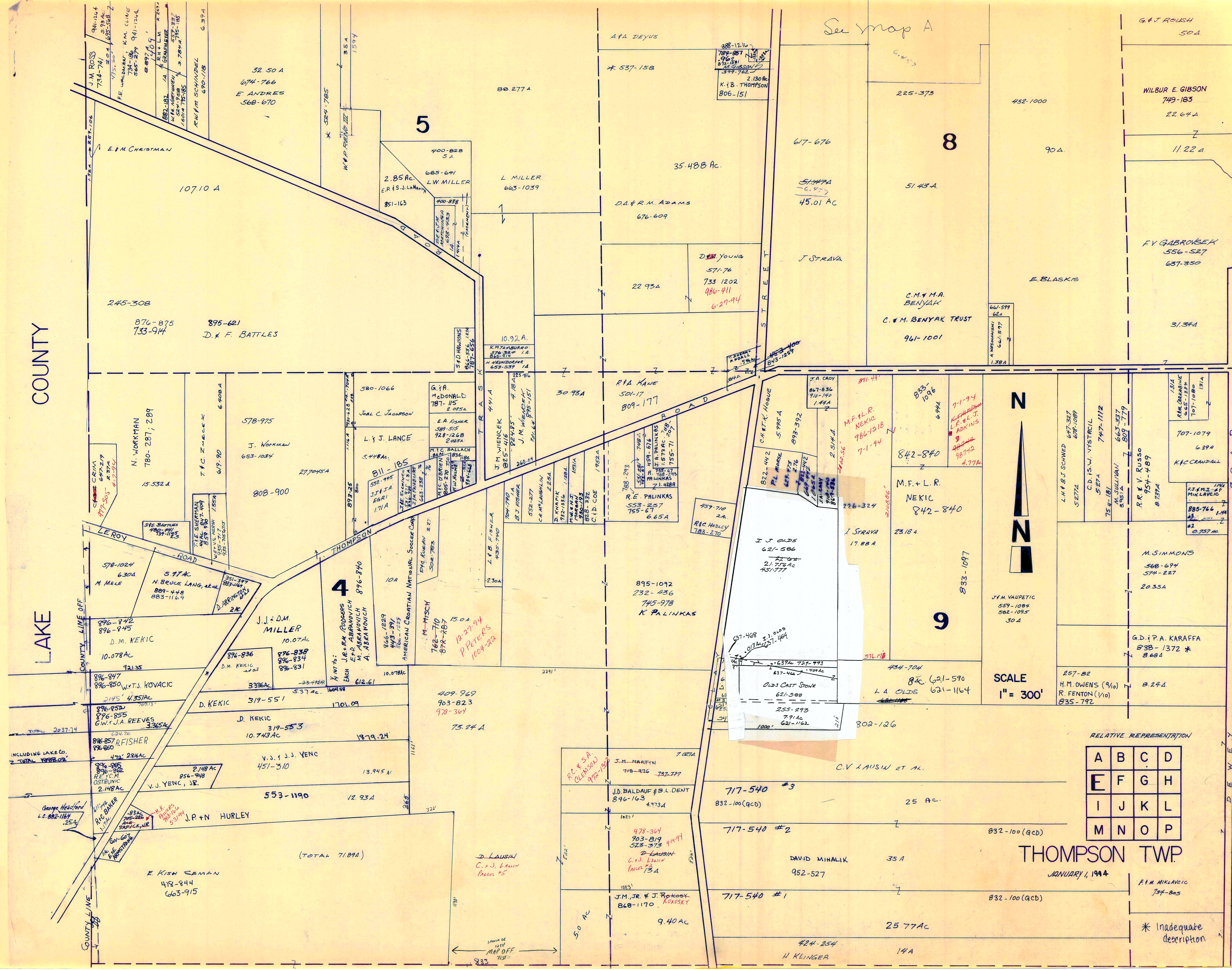
SCALE 1" = 300'

JAN. 1, 1994
RELATIVE REPRESENTATION

A	B	C	D
E	F	G	H
I	J	K	L
M	N	O	P

THOMPSON TWP.
Match Line

COUNTY LAKE



SCALE
1" = 300'

RELATIVE REPRESENTATION

A	B	C	D
E	F	G	H
I	J	K	L
M	N	O	P

THOMPSON TWP.

JANUARY 1, 1994

* Inadequate description

See map A

5

8

4

9

LE ROY ROAD

THOMPSON ROAD

STREET

DEWEY

F.M. MIKAVIC
734-805

G.D. & P.A. KARAFFA
838-1372 *

M. SIMMONS
568-694
594-227
20.35A

K.F.C. CRANDALL
707-1079
6.39A

R.R. & V. RUSSO
954-489
8.737A

C.D. F.S.N. VYSTICIL
747-1112
5.27A

L.H. & B.J. SCHWED
647-397
628-1089
5.277A

F.V. GABROVSEK
556-527
637-350

WILBUR E. GIBSON
749-183
22.64A

G. & J. ROUSH
50A

90A

452-1000

225-373

617-676

E. BLASKIS

C.M. & M.A. BENYAK
961-1001

M.F. & L.R. NEKIC
842-840

J. STRAVA
19.88A

I.J. OLDS
621-586
21.776A
451-777

R.E. PALINKAS
553-257
755-611
6.65A

K. PALINKAS
745-978
895-1092
232-436

M. MISCH
762-710
874-787
15.0A

D. KEKIC
319-551

V.J. & J.J. YENC
451-310

J.P. & N. HURLEY

E. KISH SEMAN
418-844
663-915

H. KLINGER
424-254
14A

25.77AC

832-100 (qcd)

717-540 #1

DAVID MIHALIK
952-527

717-540 #2

717-540 #3

C.V. LAUSW ET AL.

802-126

833-1097

842-840

M.F. & L.R. NEKIC
842-840

J.A. CAOY
847-534
910-140
1.44A

833-1096

811-185

30.93A

R.I.A. KANE
501-177
809-177

22.93A

D. & R.M. ADAMS
676-609

35.488 AC.

L. MILLER
665-1039

400-828
3A

2.85 AC.
L.W. MILLER

685-641

851-163

895-621
D. & F. BATTLES

876-875
733-914

245-308

876-875
733-914

895-621
D. & F. BATTLES

876-875
733-914

895-621
D. & F. BATTLES

876-875
733-914

895-621
D. & F. BATTLES

876-875
733-914

895-621
D. & F. BATTLES

876-875
733-914

895-621
D. & F. BATTLES

876-875
733-914

895-621
D. & F. BATTLES

876-875
733-914

895-621
D. & F. BATTLES

876-875
733-914

45.01 AC

J. STRAVA

2.130 AC
K. & B. THOMPSON
806-151

51.43A

617-676

51.43A

225-373

617-676

51.43A

45.01 AC

617-676

51.43A

2.130 AC
K. & B. THOMPSON
806-151

45.01 AC

J. STRAVA

2.130 AC
K. & B. THOMPSON
806-151

51.43A

617-676

51.43A

225-373

617-676

51.43A

45.01 AC

617-676

51.43A

617-676

35.488 AC.

D. & R.M. ADAMS
676-609

22.93A

30.93A

R.I.A. KANE
501-177
809-177

22.93A

895-1092
232-436
745-978
K. PALINKAS

895-1092
232-436
745-978
K. PALINKAS

895-1092
232-436
745-978
K. PALINKAS

895-1092
232-436
745-978
K. PALINKAS

895-1092
232-436
745-978
K. PALINKAS

895-1092
232-436
745-978
K. PALINKAS

895-1092
232-436
745-978
K. PALINKAS

88-277A

L. MILLER
665-1039

400-828
3A

2.85 AC.
L.W. MILLER

685-641

851-163

895-621
D. & F. BATTLES

876-875
733-914

245-308

876-875
733-914

895-621
D. & F. BATTLES

876-875
733-914

895-621
D. & F. BATTLES

876-875
733-914

400-828
3A

2.85 AC.
L.W. MILLER

685-641

851-163

895-621
D. & F. BATTLES

876-875
733-914

245-308

876-875
733-914

895-621
D. & F. BATTLES

876-875
733-914

895-621
D. & F. BATTLES

876-875
733-914

895-621
D. & F. BATTLES

32.50 A
674-766
E. ANDRES
568-670

107.10 A

E. & M. CHRISTMAN

876-875
733-914

895-621
D. & F. BATTLES

245-308

876-875
733-914

895-621
D. & F. BATTLES

876-875
733-914

895-621
D. & F. BATTLES

876-875
733-914

895-621
D. & F. BATTLES

876-875
733-914

895-621
D. & F. BATTLES

895-621
D. & F. BATTLES

107.10 A

E. & M. CHRISTMAN

876-875
733-914

895-621
D. & F. BATTLES

245-308

876-875
733-914

895-621
D. & F. BATTLES

876-875
733-914

895-621
D. & F. BATTLES

876-875
733-914

895-621
D. & F. BATTLES

876-875
733-914

895-621
D. & F. BATTLES

895-621
D. & F. BATTLES

107.10 A

E. & M. CHRISTMAN

876-875
733-914

895-621
D. & F. BATTLES

245-308

876-875
733-914

895-621
D. & F. BATTLES

876-875
733-914

895-621
D. & F. BATTLES

876-875
733-914

895-621
D. & F. BATTLES

876-875
733-914

895-621
D. & F. BATTLES

895-621
D. & F. BATTLES

107.10 A

E. & M. CHRISTMAN

876-875
733-914

895-621
D. & F. BATTLES

245-308

876-875
733-914

895-621
D. & F. BATTLES

876-875
733-914

895-621
D. & F. BATTLES

876-875
733-914

895-621
D. & F. BATTLES

876-875
733-914

895-621
D. & F. BATTLES

895-621
D. & F. BATTLES

107.10 A

E. & M. CHRISTMAN

876-875
733-914

895-621
D. & F. BATTLES

245-308

876-875
733-914

895-621
D. & F. BATTLES

876-875
733-914

895-621
D. & F. BATTLES

876-875
733-914

895-621
D. & F. BATTLES

876-875
733-914

895-621
D. & F. BATTLES

895-621
D. & F. BATTLES

107.10 A

E. & M. CHRISTMAN

876-875
733-914

895-621
D. & F. BATTLES

245-308

876-875
733-914

895-621
D. & F. BATTLES

876-875
733-914

895-621
D. & F. BATTLES

876-875
733-914

895-621
D. & F. BATTLES

876-875
733-914

895-621
D. & F. BATTLES

895-621
D. & F. BATTLES

107.10 A

E. & M. CHRISTMAN

876-875
733-914

895-621
D. & F. BATTLES

245-308

876-875
733-914

895-621
D. & F. BATTLES

876-875
733-914

895-621
D. & F. BATTLES

876-875
733-914

895-621
D. & F. BATTLES

876-875
733-914

895-621
D. & F. BATTLES

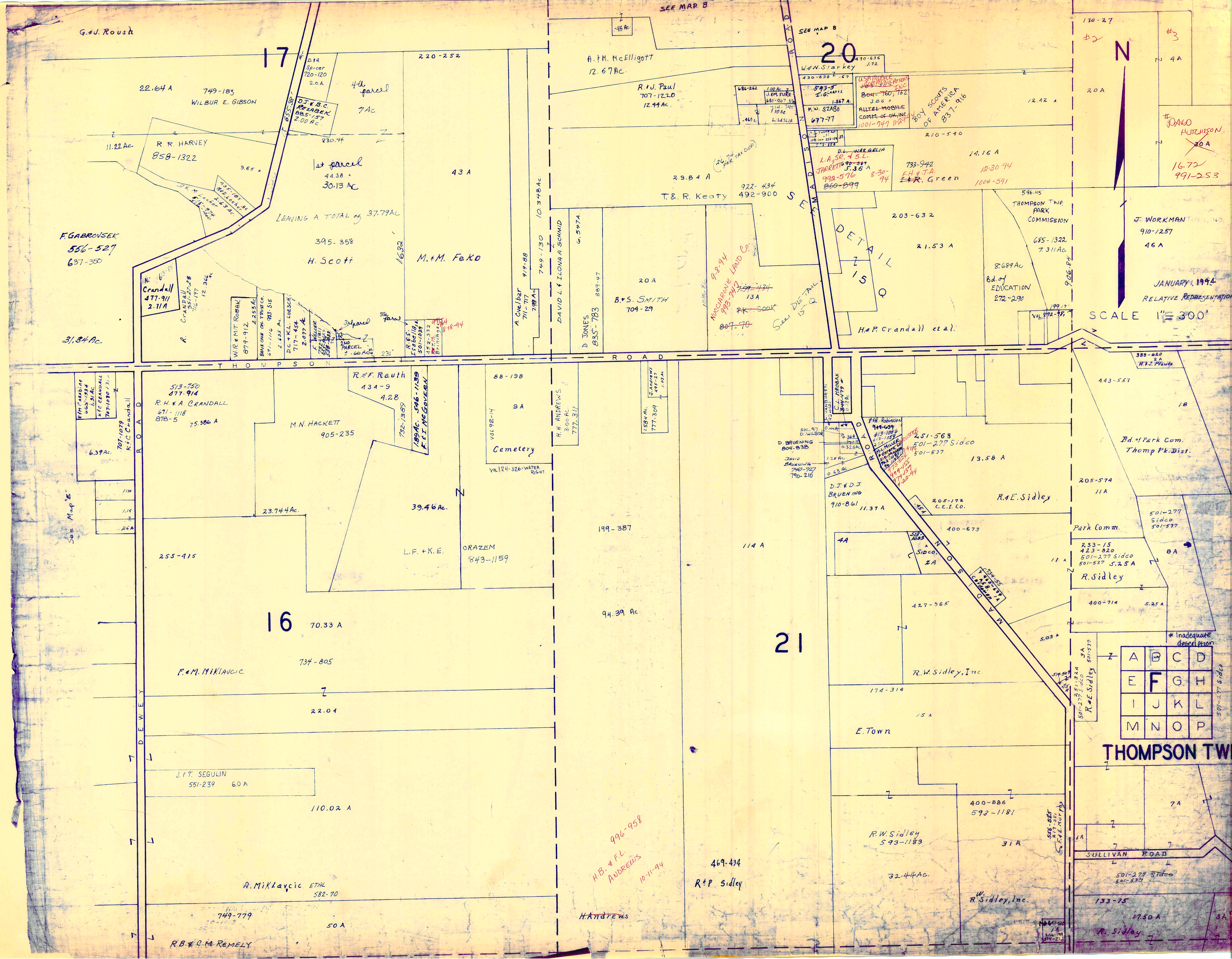
895-621
D. & F. BATTLES

SHOW ME
MAP OFF
1130

833

895-621
D. & F. BATTLES

107.10 A



G. J. Roush

SEE MAP B

SEE MAP B

N

F. GABROVSEK
556-527
637-350

22.64 A
749-183
WILBUR E. GIBSON

11.22 Ac
R. R. HARVEY
858-1322

1st parcel
44.38 A
30.13 Ac

LEAVING A TOTAL of 37.79 Ac

395.358
H. Scott

M. M. FeKo

N. Crandall
477-911
2-11A

31.34 Ac

A. H. McElligott
12.67 Ac.

R. J. Paul
707-1220
12.44 Ac.

W. N. Starkey
430-638
1.67

M. W. SZABO
677-77

29.84 A
T. R. Keaty
492-900

B. S. SMITH
704-29

D. JONES
835-783

DAVID L & ILOVA A SCHMID

DETAIL
15
Q

H. P. Crandall et al.

THOMPSON TWP.
PARK
COMMISSION

8.689 Ac
Bd. of
EDUCATION
272-290

J. WORKMAN
910-1257
46 A

JANUARY, 1994
RELATIVE REPRESENTATION

SCALE 1" = 300'

R. H. A. CRANDALL
671-1118
878-5

513-750
477-914
R. H. A. CRANDALL

R. F. RUTH
434-9

4.28

732-1389

1894-546-1139
F. T. MCGOVERN

M. N. HACKETT
905-235

88-198

9 A

Cemetery

Vol. 124-326 WATER
RIGHT

H. H. ANDREWS
300 Ac.

777-311

L. F. + K. E.

ORAZEM
843-1159

199-387

94.39 Ac.

114 A

21

D. J. + D. J.
BRUENING
910-861

11.37 A

400-673

427-965

174-314

15 A

E. Town

400-886
593-1181

31 A

R. W. Sidley
593-1183

32.44 Ac.

W. Sidley, Inc.

133-75

1750 A

R. Sidley

501-277 Sidco
501-537

204-198
874-210

13.58 A

205-172
C. E. I. Co.

R. E. Sidley

205-574
11 A

Park Comm.

R. Sidley

400-714
5.25 A

5.03 A

R. W. Sidley, Inc.

501-277 Sidco
501-537

R. E. Sidley

501-277 Sidco
501-537

501-277 Sidco
501-537

501-277 Sidco
501-537

501-277 Sidco
501-537

501-277 Sidco
501-537

501-277 Sidco
501-537

501-277 Sidco
501-537

501-277 Sidco
501-537

A	B	C	D
E	F	G	H
I	J	K	L
M	N	O	P

THOMPSON TWP.

SULLIVAN ROAD

501-277 Sidco
501-537

133-75

1750 A

R. Sidley

501-277 Sidco
501-537

204-198
874-210

501-277 Sidco
501-537

501-277 Sidco
501-537

See Map E

NUCLEARVILLE LAND CO.
9-8-94
988-747
PK 300K
807-70

H. B. + F. L.
ANDREWS
996-958
10-11-94

469-434
R. P. Sidley

H. Andrews

J. DANNO
HUTCHISON
16.72
991-253

J. WORKMAN
910-1257
46 A

JANUARY, 1994
RELATIVE REPRESENTATION

SCALE 1" = 300'

388-620
H. F. Frauda

443-557

Bd. of Park Com.
Thomp Pk. Dist.

501-277
Sidco
501-537

205-574
11 A

Park Comm.

R. Sidley

400-714
5.25 A

5.03 A

R. W. Sidley, Inc.

501-277 Sidco
501-537

R. E. Sidley

501-277 Sidco
501-537

501-277 Sidco
501-537

501-277 Sidco
501-537

501-277 Sidco
501-537

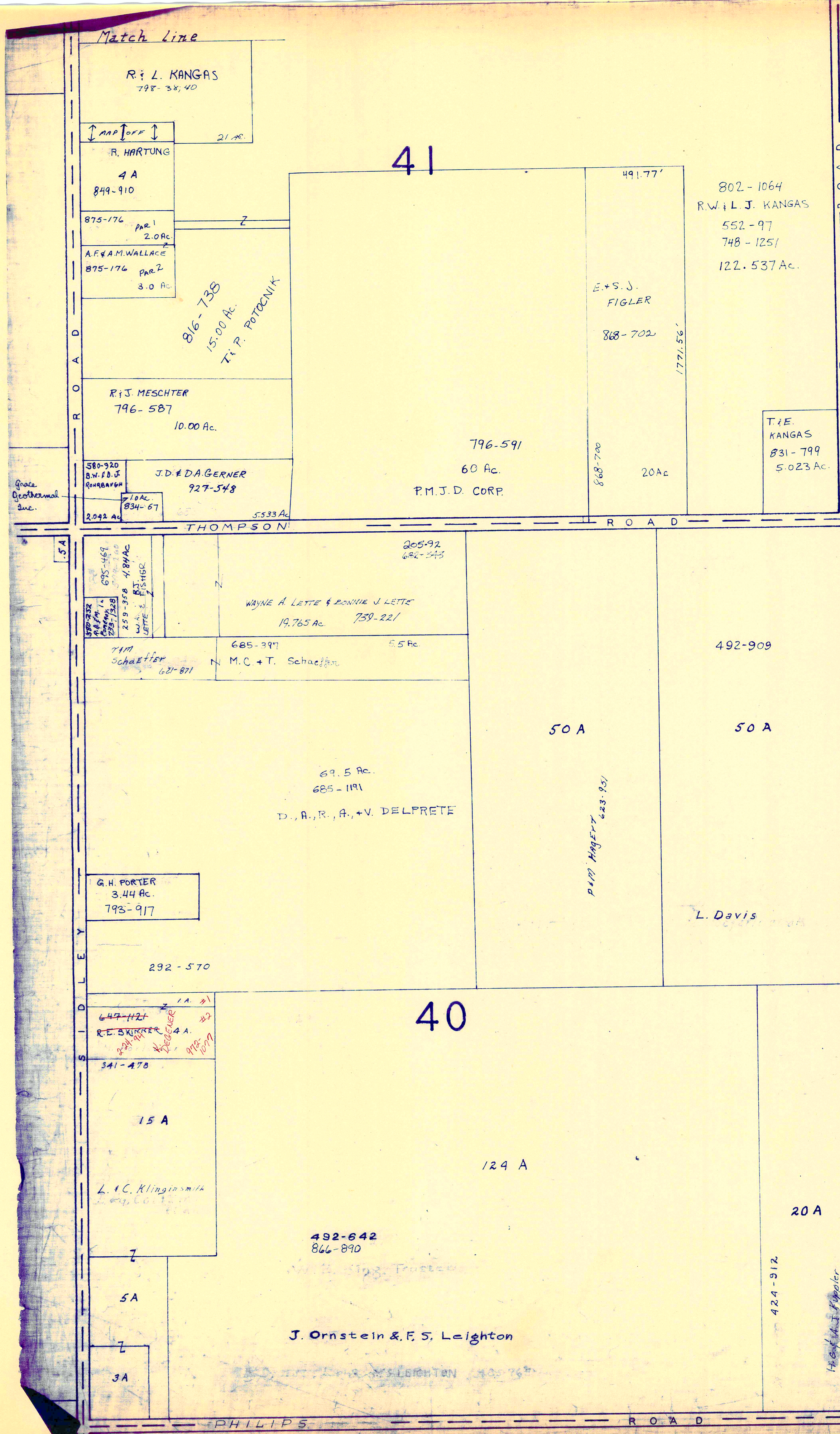
501-277 Sidco
501-537

501-277 Sidco
501-537

501-277 Sidco
501-537

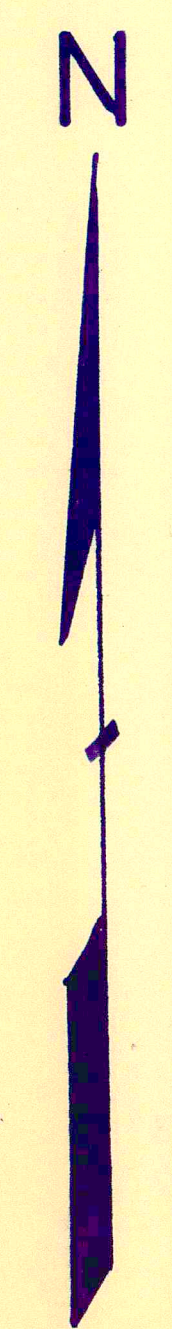
501-277 Sidco
501-537

501-277 Sidco
501-537



ASH TABULLA COUNTY ROAD

Match Line



SCALE 1" = 300'

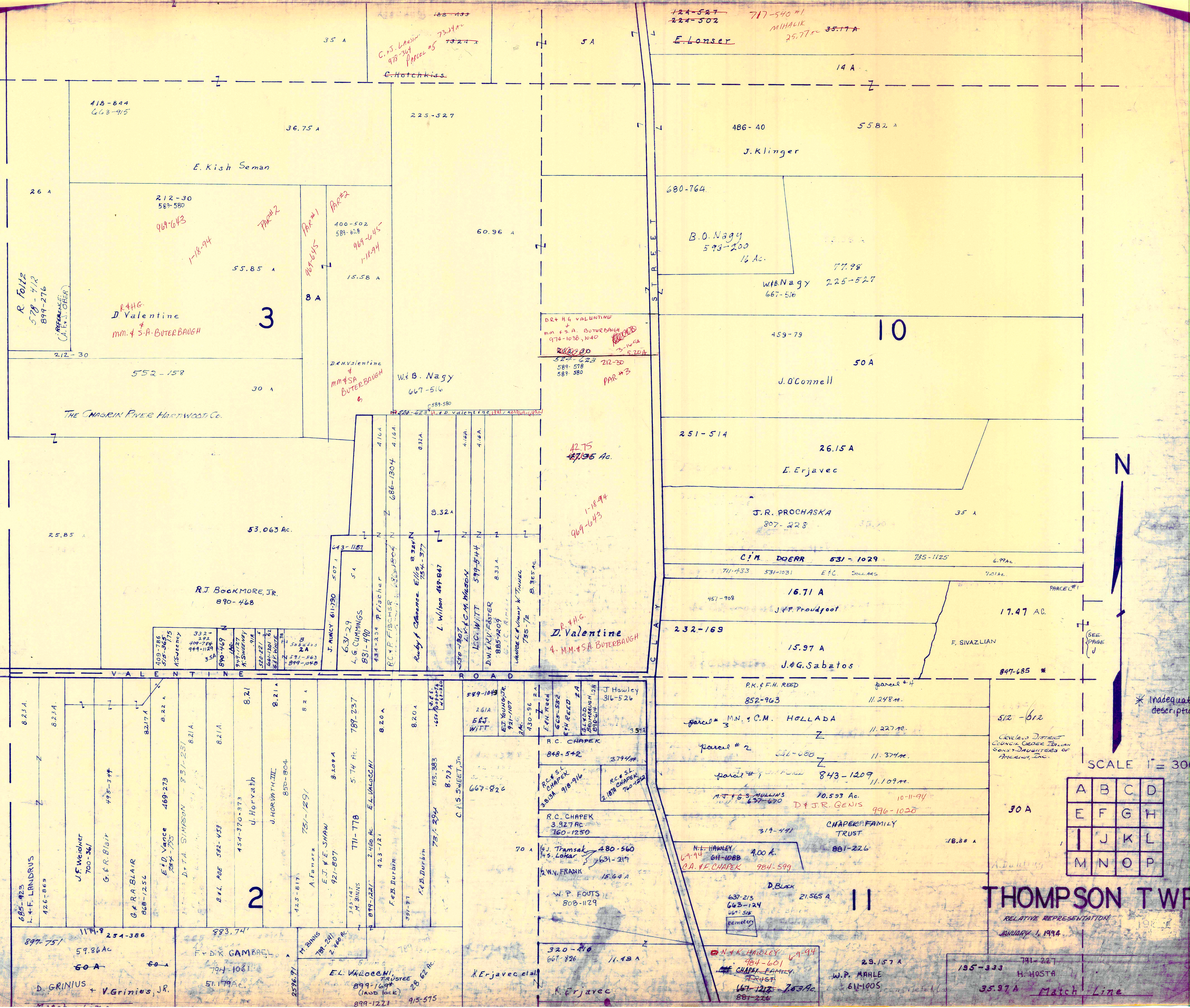
JANUARY 1, 1995
RELATIVE REPRESENTATION

A	B	C	D
E	F	G	H
I	J	K	L
M	N	O	P

THOMPSON TWP.

COUNTY

LAKE



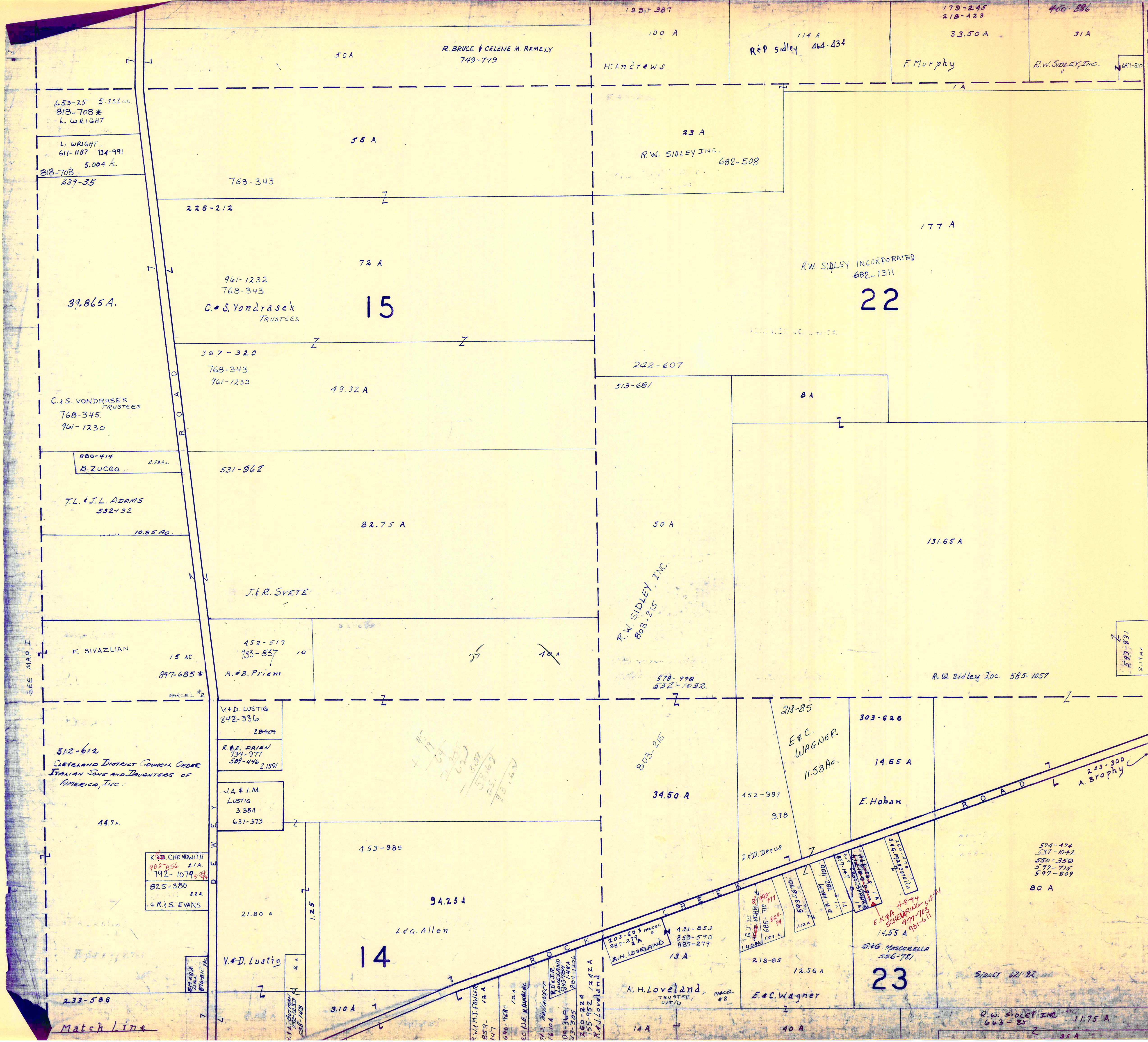
SCALE 1" = 300'

A	B	C	D
E	F	G	H
I	J	K	L
M	N	O	P

THOMPSON TWP
RELATIVE REPRESENTATION
JANUARY 1, 1994

* Inadequate description

Match Line



SEE MAP I



SCALE 1" = 300'

* Inadequate description

A	B	C	D
E	F	G	H
I	J	K	L
M	N	O	P

THOMPSON TWP

JAN. 1, 1994

RELATIVE REPRESENTATION

Match Line

Match Line

653-25 5.152 ac.
818-708*
K. WRIGHT

L. WRIGHT
611-1187 134-991
5.004 A.
818-708
239-35

C.S. VONDRASEK
TRUSTEES
768-345
961-1230

880-414 2.584 ac.
B. ZUCCO

T.L. & J.L. ADAMS
532-132
10.85 Ac.

F. SIVAZLIAN
15 ac.
847-685*
PARCEL #2

512-612
CLEVELAND DISTRICT COUNCIL ORDER
ITALIAN SONS AND DAUGHTERS OF
AMERICA, INC.
44.7A.

K.B. CHENOWETH
982-356 2.1A.
792-1079
825-380 2.1A.
R.S. EVANS

V.D. LUSTIG
842-336
20409

R.E. PRIEM
734-377
581-446 2.1591

J.A. & I.M.
LUSTIG
3.38A
637-373

V.D. LUSTIG

R. BRUCE & CELENE M. REMELY
749-779

H. ANDREWS

R.P. SIDLEY 464-434

F. MURPHY

R.W. SIDLEY, INC.

R.W. SIDLEY INC.
682-508

C.S. VONDRASEK
TRUSTEES
768-343

R.W. SIDLEY INCORPORATED
682-1311

768-343
961-1232

242-607

531-962

R.W. SIDLEY, INC.
803-215

A.#B. PRIEM
452-517
733-837

578-998
532-1032

R.W. Sidley Inc. 585-1057

842-336

734-377
581-446

637-373

453-889

L.G. ALLEN

803-215

E.C. WAGNER
11.58 Ac.

303-626

14.65 A

E. HOBAN

D.#D. DERUS

693-690

605-710

693-690

693-690

693-690

14.55 A

S.G. MASCORELLA
556-781

12.56 A

E.C. WAGNER

574-474
537-1042
550-350
577-715
597-809

80 A

A.H. LOVELAND
TRUSTEE,
U/T/D

A.H. LOVELAND

E.C. WAGNER

SIDLEY 621-92

R.W. SIDLEY INC.
663-85

11.75 A

35 A

W.M. FOWLER
859-12 A
147

690-968

690-968

C. DE KAMMEE

690-968

690-968

690-968

690-968

690-968

690-968

690-968

690-968

690-968

690-968

690-968

690-968

690-968

690-968

690-968

690-968

690-968

690-968

690-968

690-968

690-968

690-968

690-968

690-968

690-968

690-968

690-968

690-968

690-968

690-968

690-968

690-968

690-968

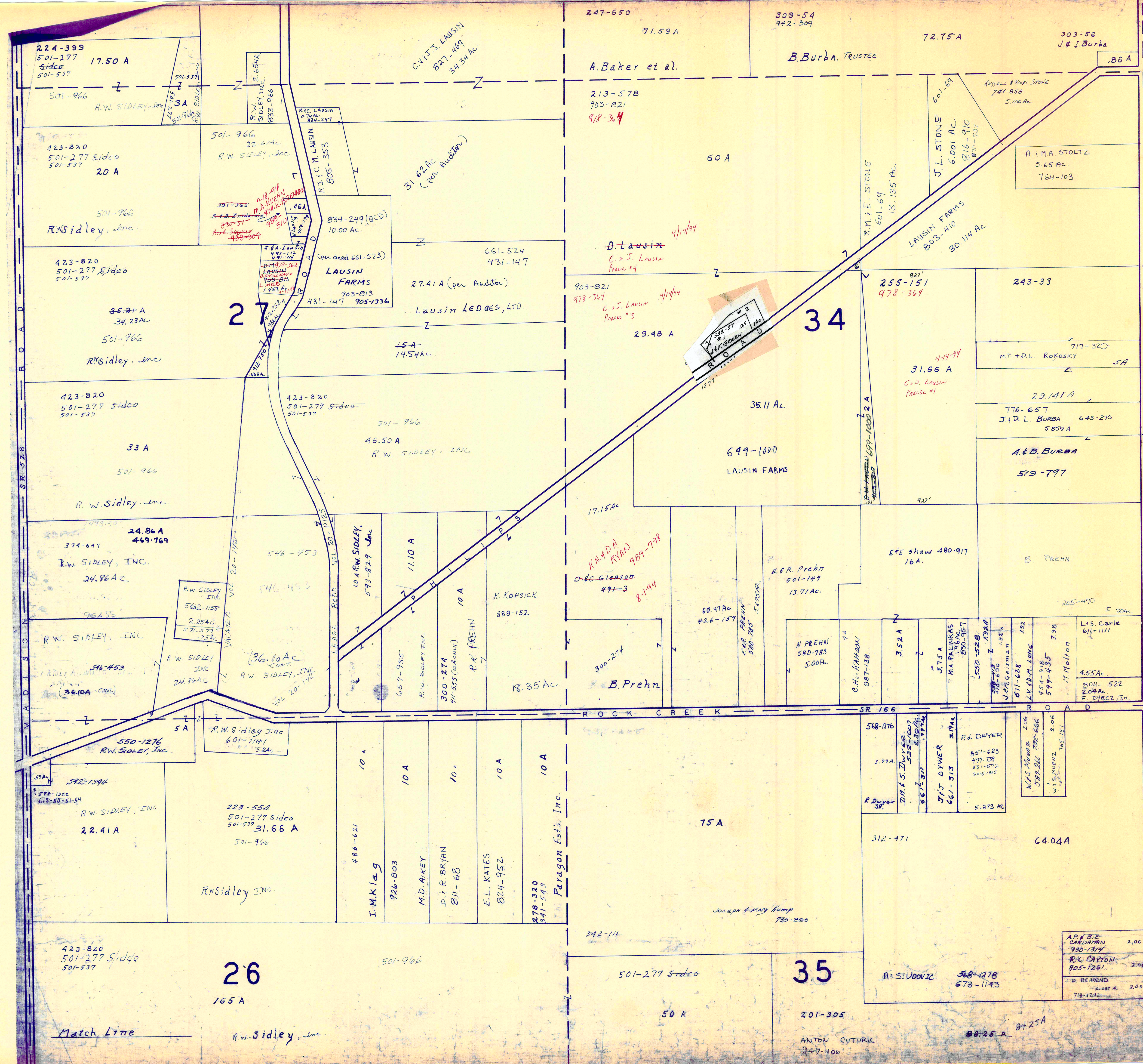
690-968

690-968

690-968

690-968

690-968



SCALE 1"=300'

A	B	C	D
E	F	G	H
I	J	K	L
M	N	O	P

THOMPSON TWP

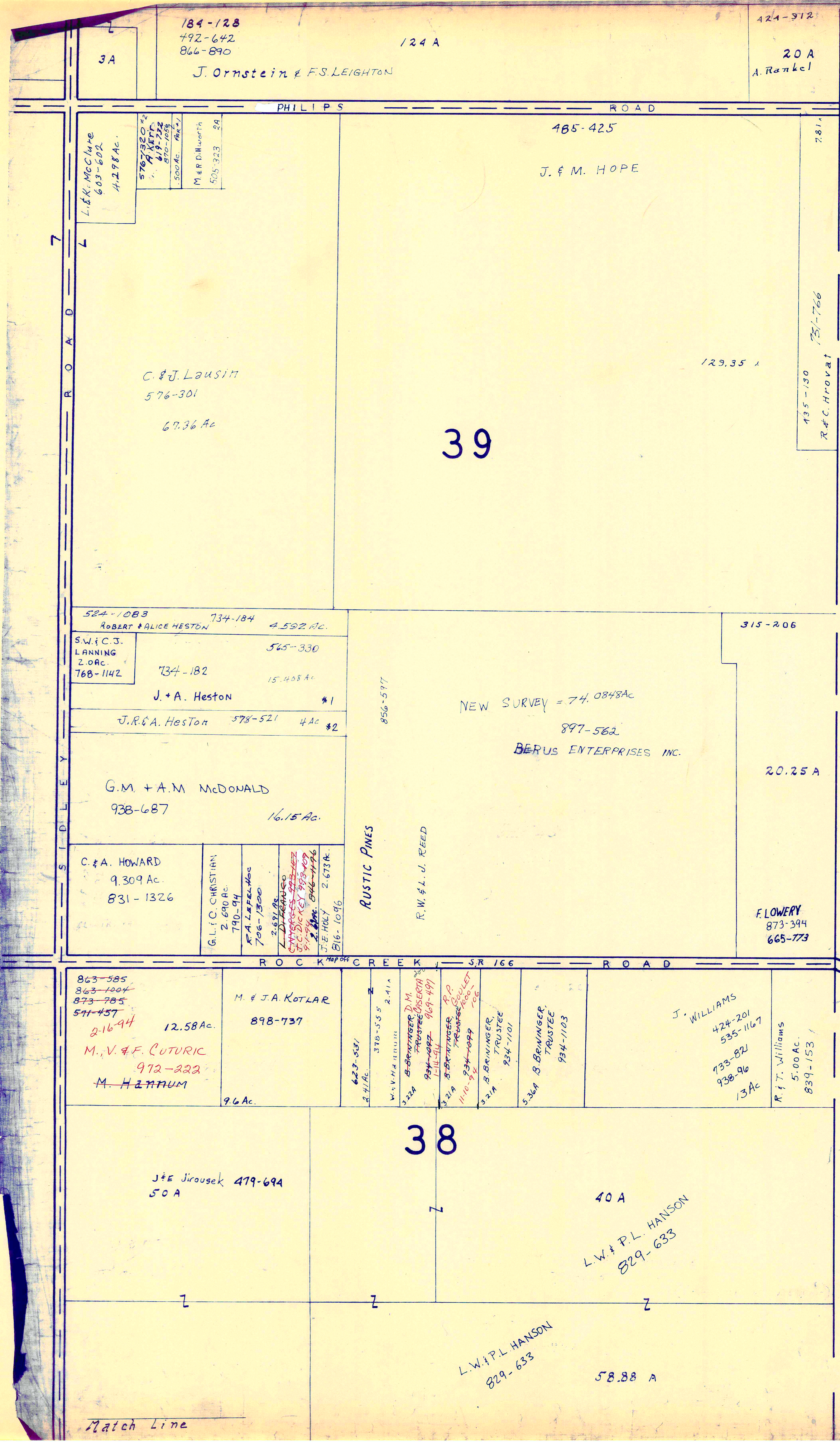
JAN 1, 1994

RELATIVE REPRESENTATION

Match Line

Match Line

A.P. 322	2.06
CARDAMUN	930-1314
R.L. CAYTON	905-1261
D. BERKEND	2.007 A. 2.09
718-1252	



ASH T A B U L L A C O U N T Y



Inadequate description

SCALE 1" = 300'

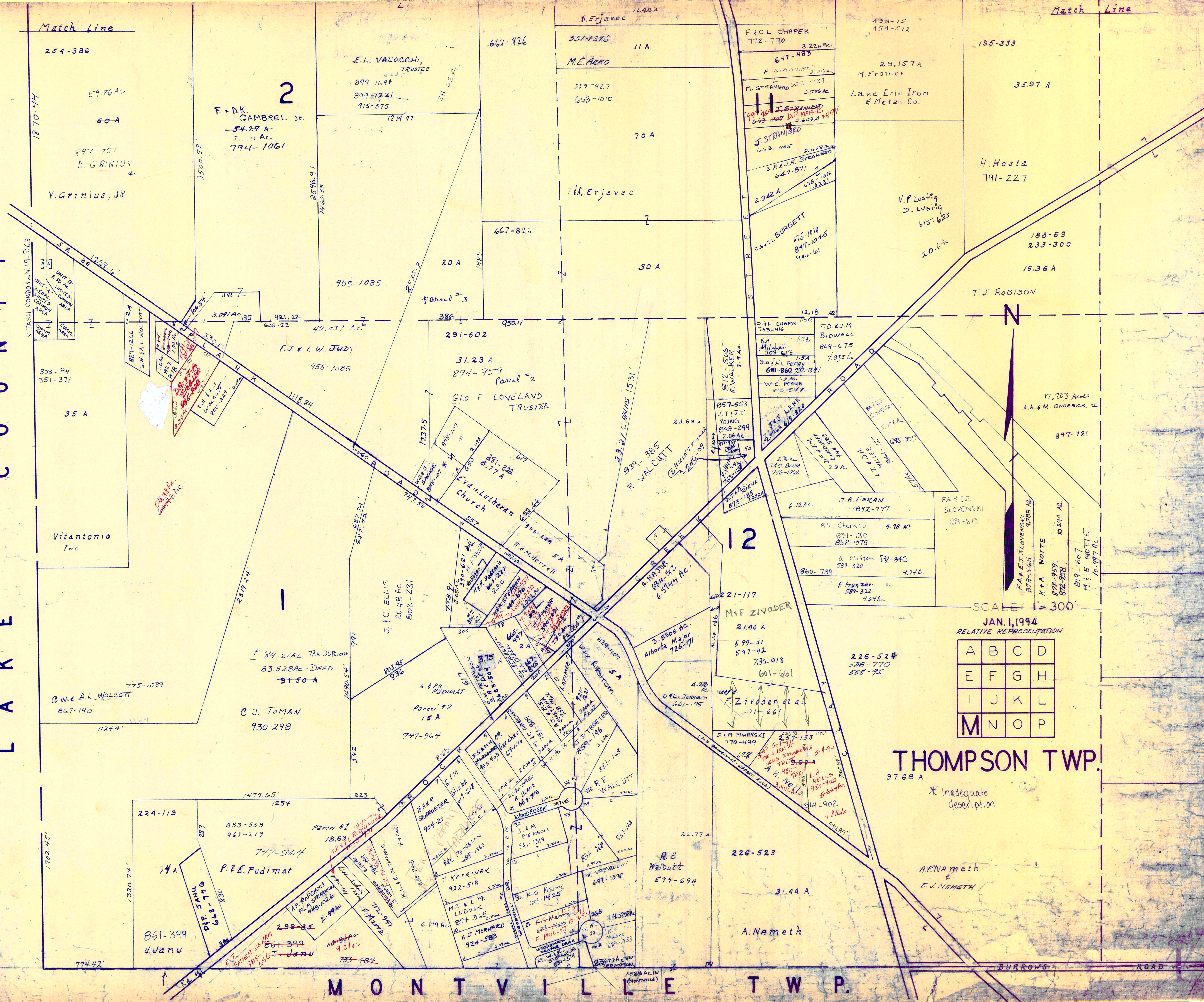
JAN. 1, 1994
RELATIVE REPRESENTATION

A	B	C	D
E	F	G	H
I	J	K	L
M	N	O	P

THOMPSON TWP.
Match Line

Match Line

L A K E C O U N T Y



JAN. 1, 1994
RELATIVE REPRESENTATION

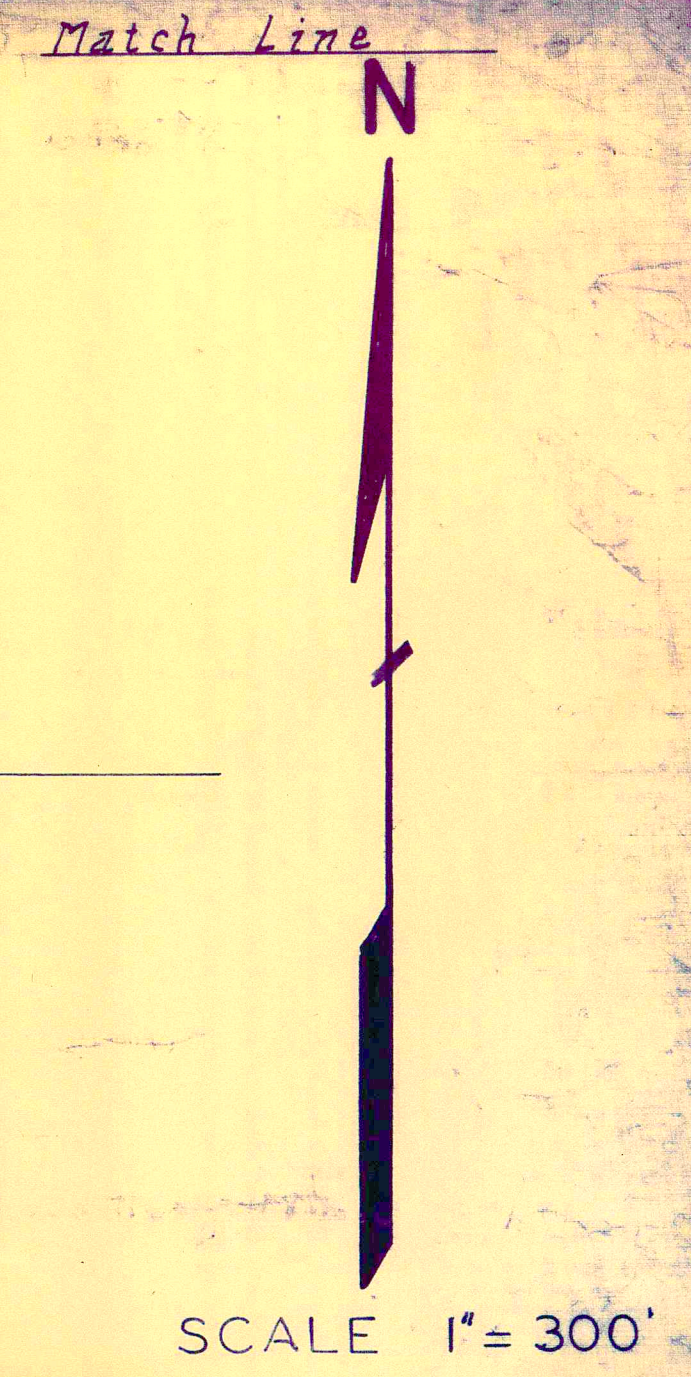
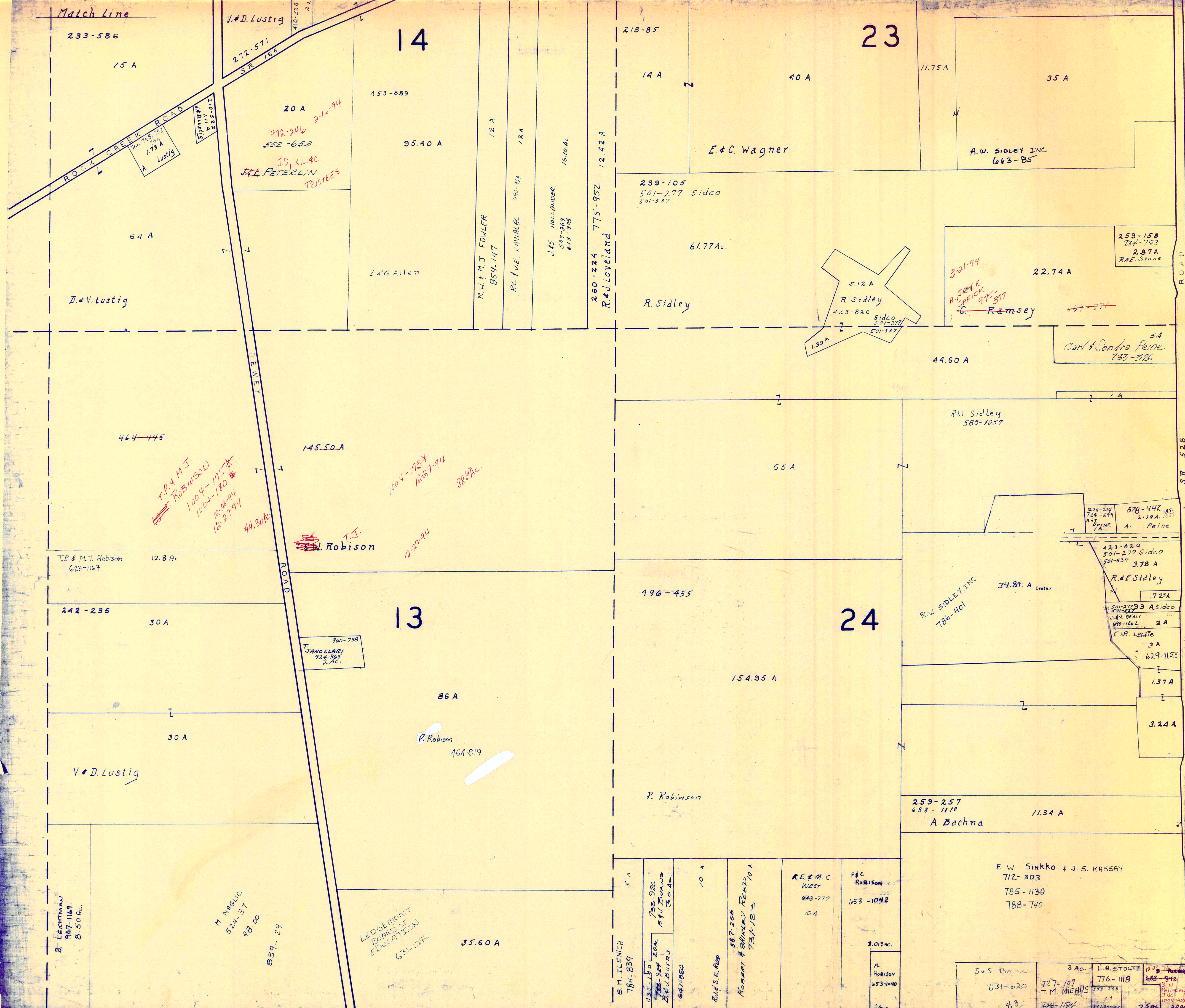
A	B	C	D
E	F	G	H
I	J	K	L
M	N	O	P

THOMPSON TWP.
97.68 A

* Inadequate description

M O N T V I L L E T W P.

BURROWS ROAD



JAN 1, 1994

A	B	C	D
E	F	G	H
I	J	K	L
M	N	O	P

THOMPSON TWP.

RELATIVE REPRESENTATION

* Inadequate description

BURROWS ROAD
MONTVILLE TWP.

Match Line

Match Line

26

35

38

423-820
501-277 Sidco
501-537

501-277 Sidco
501-537

86-25 A

165 A

50 A

ANTON CUTURIC 947-106

A. CUTURIC
947-109

R. Sidley

49.83 A

603-125
899-276
R. FOITZ

90 A

D.J. II & J.M. GILKERSON

874-1076
944-94
944-89

944-87
T.J. & T.L. BRININGER
6.996 AC. 891-1244
M.P. BRININGER
891-1242
D.N. LANDRUS
5.037 AC.

G. Ramsey

677-600

37.81A

B & D.A. DUEE
707-864

N.E. & A.C. DINGERS
872-822

2.388 AC.

2.381 AC.
907-864

591-453

254-437
722-557

8.63 A

94 A

454-142

16.35 A

Kennemetal Rod & Gun Club

N

J. Rulli
672-807

131.55 Ac.

300-149

798-380 795-1006

9.62 A

N.J. D. mukaitis

37

556-637

9.62 A

S.E. & J.L. GOEHRING

224-6

234-169

24.13 A

907-523

711-931

A.H. 2173A
Sisson
709-1019

K.M. SUSMAN

711-931

25.50 A

60.92 A

A.L. JUHAS
C.L. ANDERSON
K. TUTTLE
819-266
906-1178

36

20 A

427-814
661-711*

(TOTAL 172 TAX DUPLICATE)

SCALE 1" = 300'
JAN 1, 1994

591-771 2.35 A
S.A. BONICK
D.A. & S. BEVERIDGE
405-391

25

711-931

424-583 *

106.50 A

P. TICEL
752-210

PAR #2
3.21A

752-210 *
PETER R. TICEL

42.92 A

R.S. TUMMOR

701-1393

5.176 AC.

PAR #1

74.59 A

S.W. P.L.
GEALY

899-1147

3.025 AC.

1.37 A

5.427 AC.

D.Y. WHITE
673-4950

2.028 AC.

P.R. TICEL

801-1885

L.E. SCHMID
684-471

2.007 AC.

KARL L. TERLOP

3 A

M. Gurich 3/4 Int.
R. Gurich 1/4 Int.

D.W. & G. BREHM
20.00 AC.
673-676

356-316

5 A

35 A

J. Yelcho

67-272
661-711*
EXCEPTING
3.50 AC. 88-452
11.50 A

A	B	C	D
E	F	G	H
I	J	K	L
M	N	O	P

THOMPSON TWP.

RELATIVE REPRESENTATION

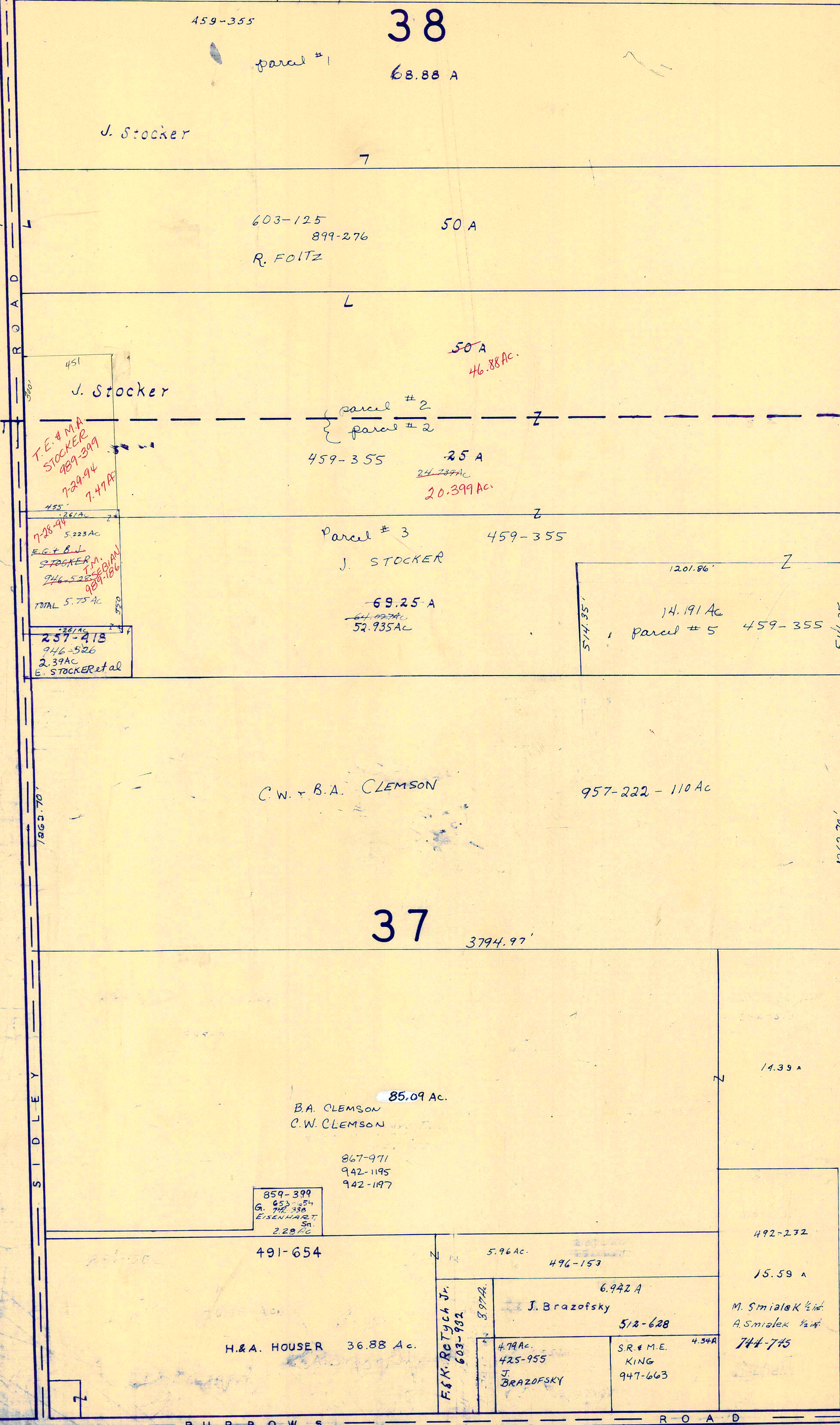
1944
K.L. CURTIS
1002-1167 * Inadequate description

R. G. LAURE
221-221
C.E. ISSENMANN
1 AC.
73-190

MONTVILLE TOWNSHIP

Match Line

Match Line



A S H T A B U L A C O U N T Y



JAN 1, 1994

JAN 1, 1994

* Inadequate description

SCALE 1" = 300'

RELATIVE REPRESENTATION

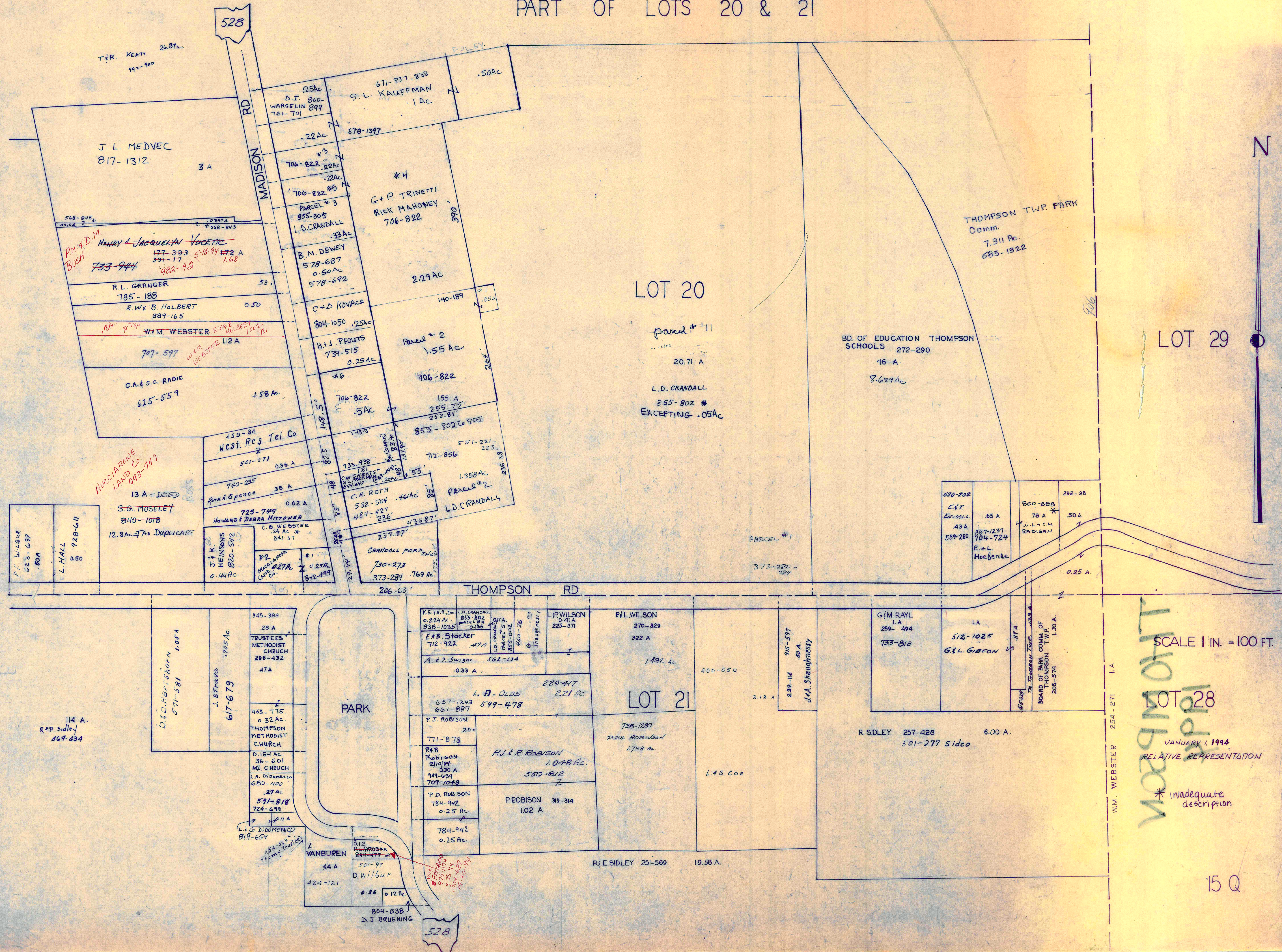
A	B	C	D
E	F	G	H
I	J	K	L
M	N	O	P

MONTVILLE TWP.

THOMPSON TWP.

THOMPSON TP.

PART OF LOTS 20 & 21



T.R. KEATH 26.87a
497-900

J. L. MEDVEC
817-1312
3 A

PM & D.M. BUSH
HENRY & JACQUELYN VUCETIC
733-944
177-393 518-944
391-17 1.68
982-42

R.L. GRANGER
785-188
.53

R.W. B. HOLBERT
889-165
0.50

W.M. WEBSTER
707-597
112 A

C.A. & S.C. RADIE
625-559
1.58 AC

MUCCIARONE
LAND CO.
993-747

S.G. MOSELEY
840-1018
12.8 AC - TAX DUPLICATE

J.K. HEINSONS
820-572
0.14 AC

HOWARD & DEBRA MITTOWER
725-744
0.62 A

C.B. WEBSTER
841-37
0.24 AC *

WACO MEANS
0.27 AC
842-499

#1
0.29 AC
842-499

#2
0.29 AC
842-499

#3
0.29 AC
842-499

#4
0.29 AC
842-499

#5
0.29 AC
842-499

#6
0.29 AC
842-499

#7
0.29 AC
842-499

#8
0.29 AC
842-499

#9
0.29 AC
842-499

#10
0.29 AC
842-499

#11
0.29 AC
842-499

#12
0.29 AC
842-499

D.I. WARGELIN
860-899
761-701
725 AC

S.L. KAUFFMAN
671-837, 838
1 AC

G.P. TRINETTI
RICK MAHONEY
706-822
2.29 AC

L.D. CRANDALL
855-805
0.33 AC

B.M. DEWEY
578-687
0.50 AC
578-692

C & D KOVACS
804-1050
0.25 AC

H.J. PROUTS
739-515
0.25 AC

706-822
1.55 AC

706-822
1.55 AC
255.75
252.84

855-802 to 805
1.358 AC

C.R. ROTH
532-504 .46 AC
484-427
236

L.D. CRANDALL
730-273
0.769 AC

CRANDALL FORD INC.
730-273
0.769 AC

206.63

THOMPSON RD

RE-TAR, INC.
0.234 AC
838-1035

E.B. Stocker
712-922
0.71 AC

A. & P. SWIGER
562-134
0.33 A

L.A. OLDS
657-1243
661-887
599-478
2.21 AC

P.J. ROBINSON
711-875
2.0 A

P.J. ROBINSON
784-942
0.25 AC

P.D. ROBINSON
784-942
0.25 AC

784-942
0.25 AC

D.J. BRUENING
804-838
0.36

L.P. WILSON
270-329
225-371
1.482 AC

P.L. WILSON
270-329
322 A

LOT 21

738-1289
PAUL ROBINSON
1.788 AC

R.J. & R. ROBINSON
1.048 AC
550-812

P. ROBINSON
319-314
1.02 A

R.E. SIDLEY
251-569
19.58 A

400-650

2.12 A

G.M. RAYL
259-484
733-818
1.4 AC

I.A.
512-1025
G.L. GIBSON
1.30 A

R. SIDLEY
257-428
501-277 side
6.00 A.

2.12 A

J.R. STRENGTHNESS
915-577
0.6 A

2.12 A

2.12 A

2.12 A

2.12 A

THOMPSON TWP. PARK
Comm.
7.311 AC
685-1322

BD. OF EDUCATION THOMPSON
SCHOOLS 272-290
16 A.
8.689 AC

520-202
E.K. EVALL
43 A
589-280

800-888
76 A
W.L. & C.M. RADIGAN

292-98
0.50 A

887-1237
704-724
E.L. Hoeberle

0.25 A

373-282
28%

0.25 A

0.25 A

0.25 A

0.25 A

0.25 A

0.25 A

0.25 A

0.25 A

0.25 A

0.25 A

0.25 A

0.25 A

0.25 A

0.25 A



LOT 29

W.M. WEBSTER 254-271 I.A.

MOORE
1110
9901

15 Q